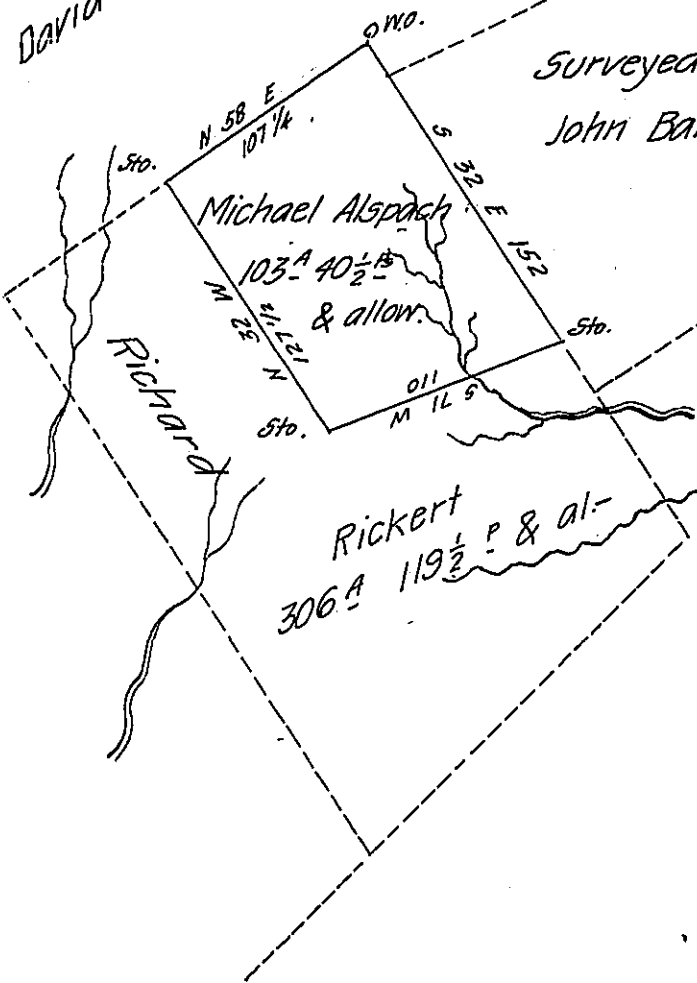


Late David Alspach



Surveyed to Dorothy Jones now John Bannon Esq. & B. Pott & others.

Situate in Norwegian Township Schuylkill County Containing 103 A
 40 1/4 P & allowance of six per Cent for Roads &c. It being a part of 306 A
 119 1/2 P & allow. which was surveyed to Hannah Donaldson by virtue of an
 Appliⁿ N^o 3567 dated the 21th of September 1768 entered by her now sur-
 veyed for Michael Alspach Aug^t 3^d 1823 By

Jn. Dreher D.S.

To Samuel Cochran Esq.

Surveyor Gen^l of Penn.

IN TESTIMONY that the above is a copy of the original remaining on file in
 the Department of Internal Affairs of Pennsylvania, made
 conformably to an Act of Assembly approved the 16th day of
 February, 1833, I have hereunto set my Hand and caused
 the Seal of said Department to be affixed at Harrisburg,
 this twenty seventh day of May 1908

Henry Howell

Secretary of Internal Affairs.